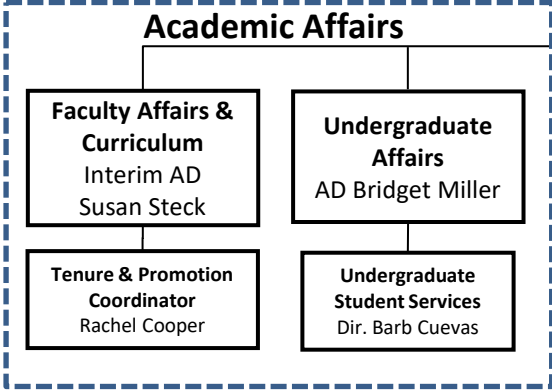


**Norman J. Arnold
School of Public Health
Dean Tom Chandler**

Executive Assistant
Patsy Yarborough



Access and Collective Engagement
AD Toni Torres-McGehee

Research
Interim AD
Daniela Friedman

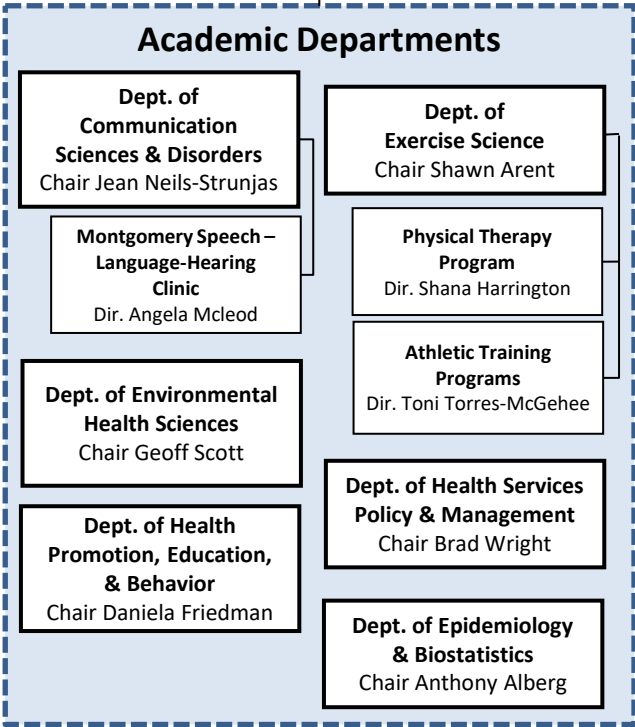
- Office of Research**
Dir. Charlotte Stalvey

Public Health Practice
Assistant Dean
Myriam Torres

- Applied Practice**
Dir. Zach Jenkins
- Workforce Development**
Dir. Mary Wilson

Operations & Accreditation
ED Lee Pearson

- Evaluation & Academic Assessment**
Dir. Kollette Clark
- Data Analytics**
Dir. Adam Sokol
- Information Technology**
Dir. Tom Johnson
- Information Services**
Dir. Matt McGrievy
- Graduate Student Services**
Dir. Christy Smith
- Center for Applied Research & Evaluation**
Dir. Pam Gillam
- Center for Community Health Alignment**
ED Julie Smithwick
- Community Health Worker Institute**
Dir. Andrea Heyward
- PASOs**
ED Maria Martin



Business & Finance
ED Sandy Besley

Human Resources
Dir. April Davis

Development
Dir. Lauren Johnson

Population Health - PRISMA Greenville
Dir. Caroline Rudisill

