

University of South Carolina

LAW STUDENT BUILDING EMERGENCY ACTION PLAN



School of Law
1525 Senate Street
Columbia, SC 29208

Resources for Student Safety

Emergency Phone Numbers	Page 2
RAVE Guardian App	Page 3
Carolina Alert	Page 5
Emergency Call Boxes	Page 6
Active Shooter - AVOID, DENY, DEFEND	Page 8
Disruptive or Unruly Visitor	Page 10
Emergency Actions	Page 11
Helpful Resources and Videos	Page 13

Resources for Student Safety

- Emergency Phone Numbers
- RAVE Guardian App
- Carolina Alert
- Call boxes

EMERGENCY PHONE NUMBERS

USC Police Department: 803-777-4215

EMERGENCY: 911

***PUT THE USC POLICE DEPARTMENT PHONE
NUMBER IN YOUR CONTACT LIST SO YOU
ALWAYS HAVE IT!***

Why call USC Police Department rather than 911 in
the event of an active shooter?

USC police department can immediately react whereas if you call 911 (the city-wide emergency system) the dispatcher will direct the call to the USC Police Department in the event of an active shooter.

RAVE Guardian App

To download the RAVE app:



RAVEGuardian

The free app is available for iPhone and Android users. You can find it at the [iTunes](#) or [Google Play](#) store. You also can install the app or learn more [at the Rave website](#).

Rave Guardian Safety App

USC provides a FREE mobile app to keep students, faculty, and staff safer on and off campus. Rave Guardian turns any cell phone into a personalized protection network, connecting with University Police during an emergency and giving them important information that they may need instantly. Rave Guardian enhances safety through a virtual network of friends, family, and campus law enforcement.

Among its features:

Caller Profiles: Students, faculty and staff can set up complete profiles in Rave Guardian. By providing information about any medical conditions, your course schedule, addresses, campus ID photo and other critical data, you make it easier for campus police to find and help you in an emergency.

Make sure you use your sc.edu email address when registering.

Panic Calls: These instantly connect with USC Police or with local 911. If the call is placed to USC Police, Rave Guardian automatically delivers your complete caller profile to our telecommunications personnel. The app also sends GPS coordinates pinpointing where the call was made.

Safety Networks: The app lets you set safety timers notifying people you trust of your whereabouts.

Anonymous Crime Tips: Dispatchers will assess the information. If help is needed immediately, an officer will be sent. Less urgent matters will be forwarded to investigators. Issues that aren't police matters – street light outages or water line breaks – will be forwarded to the right agency. Tips also will be forwarded to outside police agencies if appropriate.

- If you encounter a disruptive or unruly visitor, **call campus police** or report it on the **RAVE App**.
- If there is an active shooter, campus police can lock down buildings immediately upon notification.

CAROLINA ALERT

Register for Carolina Alert

Once you complete your registration, you'll receive notifications about active emergency alerts.

1. Log in to my.sc.edu/emergency.

2. You will be presented with a series of screens to update your information. Complete all applicable fields and ensure your information is correct. Do not skip these messages.

For questions about entering your information on my.sc.edu, contact the DoIT Help Desk at 803-777-1800 weekdays between 8 a.m. and 6 p.m.

Your one-stop emergency information source provides information on:

- What's happening
- Necessary information to stay safe
- Updates on changes in the situation
- Sign up for alerts on our website sc.edu/USCPD
- Alerts are accessible to students and parents
- Follow Carolina Alert on Twitter ([@CarolinaAlert](https://twitter.com/CarolinaAlert))

Text messages will only be used if a situation exists that poses an immediate risk to life safety and requires persons to change their behavior.

Emergency Call Boxes

Several hundred call boxes are strategically placed around campus to connect you directly to a USCPD dispatcher in case of an incident or emergency.

Operating an Emergency Call Box

Push the red button. You will immediately be connected with a USCPD dispatcher. Even if you are unable to communicate, the dispatcher will know your exact location. If you are being chased and cannot stop, press the call boxes as you pass, and police officers will respond to the area.

When You Should Use an Emergency Call Box

Call boxes should be used to report crimes in progress, fires, medical emergencies or threats to personal safety.

Identifying Call Boxes

Look for the boxes' bright blue lights. Note the location of boxes in the areas you frequent on campus.

ACTIVE SHOOTER

If an active shooter is on the premises:

- ⊕ Remain calm and immediately call USC POLICE at (803) 777-4215.
Ask them to lock down the law school.
- ⊕ Next, CALL 911; leave the line open if you cannot speak.



AVOID

If something does not seem right, leave the area if possible.



DENY

If getting away is impossible, create barriers.



DEFEND

If you cannot avoid or deny, be prepared to defend yourself by any means necessary.



ACTIVE SHOOTER

**Remain calm and immediately call USC Police at
803-777-4215**

Avoid

- Proceed to the safest location based on your assessment of what's happening around you.
- The greater distance and more barriers you can place between you and the threat, the better.
- Do not activate fire alarms, as you may endanger others who would be safer remaining in their present location.
- If possible, find exit stairwells/paths and exit the building.

Deny

- If possible, find safe rooms in the School of Law building that do not have windows and have adequate space for people to hide.
- All School of Law Classrooms are on Card Access and will be locked down based on the School's Carolina Card access protocol.
- All classroom entrance doors have 3M security film that is bullet resistant and keeps the glass from breaking.
- Secure yourself inside the most fortified room available and use anything available to barricade the door.
- If you can't barricade the door, use objects such as belts, clothing, or chairs to secure the door as best you can.
- Make yourself "a hard target" by turning off the lights, remaining out of sight, and being still and quiet.
- Call 911 even if you can't speak and you are only able to leave an open line.
- Do not respond to requests to open the door or come out unless you are absolutely sure that it is law enforcement.

Defend

- If you cannot Avoid or Deny, be prepared to Defend yourself using whatever means necessary. This is about your survival — do not fight fairly.
- Do anything you must to survive.
- Do not stand still – movement makes you a harder target to hit.
- Throw objects.
- Use weapons of opportunity (e.g. fire extinguishers, laptops, chairs, keys, pens, etc.) to attack sensitive areas such as the eyes, throat, and groin
- If you have others with you, coordinate your attack from multiple points of opposition.

All Clear

When police arrive, show your hands, and follow all commands.



Disruptive or Unruly Visitor

Anyone who encounters a disruptive or unruly visitor should call **USC Police at 803-777-4215**. You can also use the **Rave Guardian App** to contact the USC Police and provide location and incident information while proceeding to a safe environment.

Expressions of disruptive behavior include:

- **Angry or aggressive behavior**
- **Overly loud, rambling or disoriented talking**
- **Abusive talk or gestures**
- **Vandalism of books, furniture, bathrooms or building space**
- **Soliciting for money, food or other items**

If you feel uncomfortable contacting the USC Police directly with the disruptive visitor present, excuse yourself from the visitor and instruct another person nearby to contact USC Police, or text another person to contact USC Police.

Please remember that the Law Library is open to the USC community, the bench and bar, and the public. Also, the café is open to the public during their business hours.

Emergency Actions

What to do in the event of the following:



Fire

- Anyone who becomes aware of a fire shall immediately activate the building fire alarm system.
- All faculty, staff, students, and visitors will regard any activation of a fire alarm as a true fire emergency unless there has been previous notification of the fire alarm system being tested.
- The person activating the fire alarm shall dial 911 or (803) 777-4215 from a cellular phone and advise the USC Communications Center of the fire incident.
- Exit directly out of the closest exit, even if it is an emergency exit.
- Collect your valuables (purse, coat, etc.) only if time permits.
- **DO NOT USE ELEVATORS.**
- Do not re-enter the building until the fire officials give the approval.



Severe Weather

- The Emergency Management Unit monitors the National Weather Service (NWS) and receives severe weather notifications directly from the NWS that are specific to the University campus.
- Once occupants have been notified of a THUNDERSTORM WARNING, they should take no other steps than to ensure that they are prepared if conditions deteriorate.
- Once occupants have been notified of a TORNADO WARNING, they should gather their valuables, if safe to do so, and take cover in the nearest Severe Weather Shelter area in the building.

- Once the warning period has expired you will be notified of approval for students to return to their classes/study rooms or go home.



Utility Outage

Be careful about:

- Dangers from tripping and injuries due to lights being out.
- Person(s) being trapped in elevators.
- Dangers of extreme heat or cold on employees.
- Difficulty in contacting responders if an emergency occurs while telephones are out.
- Limited or inability to use cellular phones during a cellular outage.
- Sanitation problems due to no water.
- If you are in the elevator, utilize the call button in the elevator to notify the USC Police and request assistance.



Evacuation Planning

- Look for evacuation maps in classrooms and hallways for the quickest exit.
- Become familiar with these emergency evacuation maps.
- Don't wait for an emergency to know your quickest escape route.

Helpful Resources & Videos

[https://sc.edu/about/offices and divisions/law enforcement and safety/documents/active-shooter.pdf](https://sc.edu/about/offices_and_divisions/law_enforcement_and_safety/documents/active-shooter.pdf)

View the online videos as les.sc.edu to help you better prepare for an active shooter incident. Our presentation, "Community Response to an Active Shooter" is available for your organization, classroom, or event. To schedule a presentation, contact Maj. Geary at 803.777.0507 or email him at iageary@maibox.sc.edu. Learn more. Find more crime prevention and safety resources online at les.sc.edu.

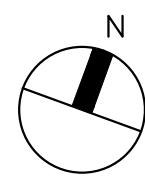
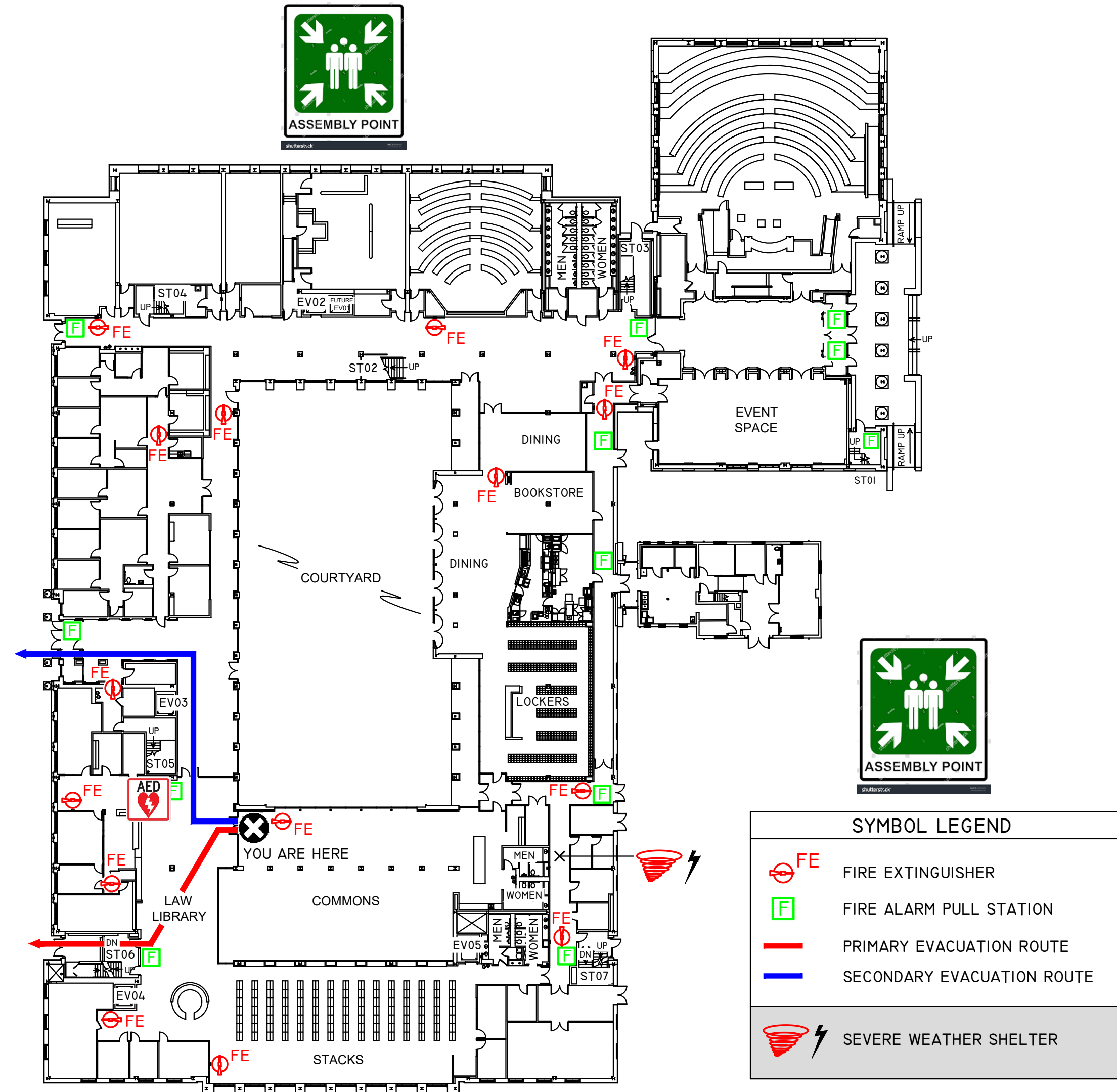
Active shooter/gunfire in the School of Law Building Video:

<https://www.youtube.com/watch?v=j0lt68YxLQQ>

Building occupants could become aware of a violent act by the sounds of an explosion, gunfire, scuffling, yelling/screaming, or by observation of events that could be intentional acts of violence.

Occupants may become aware of such an event based on notification from the Building Emergency Coordinator, other faculty, staff, or students, from first responders, or from Carolina Alert. **The person(s) who become aware of these life-threatening acts should immediately seek safe shelter and call USC Police at 911 or 803-777-4215.**

EMERGENCY EVACUATION PLAN



5
EVI

16JUN17